

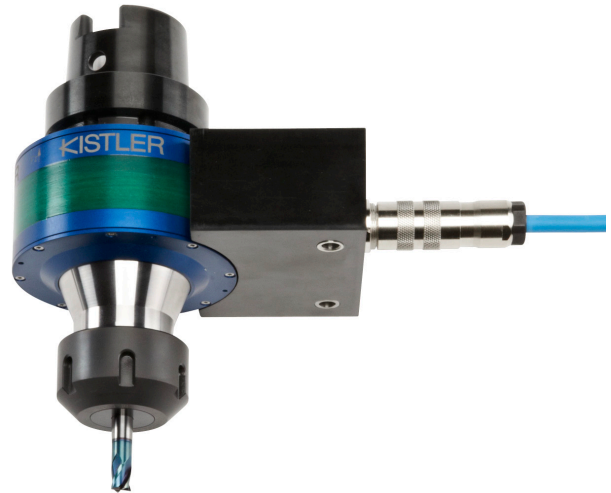
4-Component Dynamometer (RCD)

Type 9170A...

Rotating – for Measuring Cutting Forces on a Rotating Tool

Rotating 4-component dynamometer for measuring the forces and torque on a rotating tool during cutting processes. Energy and measured values are transmitted on a non-contact basis, preventing wear.

- Cutting force measurement on the rotating tool
- 4-component measurement: F_x , F_y , F_z and M_z
- Up to max. 20 000 min^{-1}
- Non-contact data transmission
- Internal cutting fluid supply possible
- Available for conventional machine spindle interfaces
- Tool holder with ER clamps
- High run-out and balance quality
- Complete measuring system



Description

The complete measuring system comprises a rotor, stator, connecting cable and signal conditioner. The spindle type on the machine tool determines which rotor version is required. The piezoelectric 4-component sensor, four charge amplifiers and the digital transmission electronics are integrated into the rotor. It measures the radial forces F_x and F_y , the axial force F_z and the torque M_z .

Digitized measuring signals to the stator, the range selection of the charge amplifiers and the power supply are transmitted contactless. The stator is fastened to the machine tool with a gap of a few millimeters.

The signal conditioner is responsible for the power supply, signal transmission and for controlling the system. Three measuring ranges can be selected and the measurement can be started either manually or via a serial interface. The measuring signal is an analog ± 10 Volt signal. Either the DynoWare software from Kistler, or compatible data acquisition software, can be used to record the data.

Technical Data

Rotor Type 9170Axxx0

Speed, max.		min^{-1}	20 000 ¹⁾
Measuring range 1, nominal	F_x, F_y	N	-5 000 ... 5 000 ²⁾
	F_z	N	-20 000 ... 20 000 ²⁾
	M_z	N·m	-150 ... 150 ²⁾
Measuring range 2, nominal	F_x, F_y	N	-2 000 ... 2 000 ²⁾
	F_z	N	-5 000 ... 5 000 ²⁾
	M_z	N·m	-50 ... 50 ²⁾
Measuring range 3, nominal	F_x, F_y	N	-500 ... 500 ²⁾
	F_z	N	-2 000 ... 2 000 ²⁾
	M_z	N·m	-10 ... 10 ²⁾
Sensitivity range 1	F_x, F_y	mV/N	≈ 2
	F_z	mV/N	$\approx 0,5$
	M_z	mV/N·m	≈ 66
Sensitivity range 2	F_x, F_y	mV/N	≈ 5
	F_z	mV/N	≈ 2
	M_z	mV/N·m	≈ 200
Sensitivity range 3	F_x, F_y	mV/N	≈ 20
	F_z	mV/N	≈ 5
	M_z	mV/N·m	$\approx 1\,000$
Linearity		%FSO	$\leq \pm 1,0$
Hysteresis		%FSO	$\leq 1,0$

¹⁾ Rotors with spindle adapter DIN 69871-AD50, MAS 403 BT 50 or ANSI B5.50-50 are limited to 12 000 min^{-1} .

²⁾ Small spindle adapters limit the useable force range of the RCD. The rotors are calibrated in accordance with limit values (see page 4).

Technical Data (Continuation)

Crosstalk	$F_x \leftrightarrow F_y$	%FSO	$\leq \pm 2,0$
	$F_{x,y} \rightarrow F_z$	%FSO	$\leq \pm 3,5$
	$F_z \rightarrow F_{x,y}$	%FSO	$\leq \pm 1,0$
	$F_z \rightarrow M_z$	mN·m/N	$\leq \pm 1$
	$M_z \rightarrow F_z$	N/N·m	$\leq \pm 1$
Natural frequency ²⁾	$f_{0, F_{x,y}}$	Hz	$\approx 2\ 000$
	f_{0, F_z}	Hz	$\approx 7\ 600$
Low-pass (anti-aliasing)		kHz	3,0
Low-pass filter Type			6 pol., Butterworth
Sampling rate per channel		kHz	22,2
Resolution		bit	12
Operating temperature range		°C	0 ... 60
Degree of protection (IEC 60529)			IP67
Internal cutting fluid pressure, max.		bar	70
Balancing class		G	$\leq 2,5$
Weight (rotor only) ²⁾		kg	1,6

²⁾ Applies to Type 9170A131 (RCD with HSK-A63 spindle adapter, ER clamp adapter, without tool)

Signal Conditioner Type 5238Bx

Number of channels			4
Number of range per channel			3
Low-pass (adjustable)			
Cut-off frequency 1	kHz		0,3
Cut-off frequency 2	kHz		1,0
Cut-off frequency 3	kHz		3,0
Low-pass filter Type			6 pol., Butterworth
Signal output FSO	V		± 10
Connector signal output			4xBNC neg. D-Sub neg. 15-pol.
Interface (for remote control)			RS-232C
Power supply	VAC	V	100 ... 240
Tolerance		%	± 10
Mains frequency		Hz	50 ... 60
Operating temperature range		°C	0 ... 60
Degree of protection (IEC 60529)			IP30
Dimensions	WxHxD	mm	248x253x146
Weight (signal conditioner only)		kg	3,4

Applications

A rotating dynamometer is used to measure the three orthogonal forces F_x , F_y and F_z , as well as the torque M_z during cutting production processes (milling and drilling, in particular). A rotating dynamometer enables the:

- Recording of the mechanical load during the cutting process
- Wear analysis
- Optimization of cutting parameters
- Calculation of material-specific constants (e.g. the specific cutting force)
- Optimization of tool geometry and coating
- Verification of cutting simulations

The forces and the torque are measured close to the cutting edge of the tool. This allows the active force vector on single-point tools to be measured directly. Due to the newly developed piezoelectric sensor located in the rotor, it is possible to record highly dynamic signals. The higher natural frequency and sampling rate, compared with the predecessor system, allows signals to be monitored during high-speed processes.

Advantages of a Rotating Dynamometer

Employing a rotating dynamometer as a measuring tool offers a number of advantages to the user. For example:

- The torque to be applied during the machining process is measured directly. This permits an accurate assessment of the condition of the tool, such as its state of wear
- The rotor of a rotating dynamometer rotates with the tool and allows the direct quantification of the mechanical load of the tool
- Thanks to the independence of workpiece mass, size and shape, the cutting force and torque can be measured on complex and cost-intensive components, e.g. structural parts of aircraft or Blisks (Blade Integrated Disc)

Signals of a Rotating Dynamometer (RCD)

The Type 9170A... rotating dynamometer is based on a piezoelectric 4-component sensor. The rotor of the measuring system is connected to the machine spindle. This means that the coordinate system of the RCD also rotates around the vertical Z-axis. Due to the rotating coordinate system of the RCD, it is possible to directly assess the mechanical loads of the tool cutting edge.

Mounting the RCD Type 9170A...

Like a conventional tool, the rotor of a rotating dynamometer is pulled into the machine spindle through the spindle adapter. Mounting the stator onto the machine structure or the stationary part of the machine spindle is up to the user. Reference the Type 9170A... instruction manual for more detailed information.

Handling the RCD Type 9170A... During Operation

To prevent a collision between the stator and the stator holder, we recommend manually inserting the RCD Type 9170A... into the machine spindle.

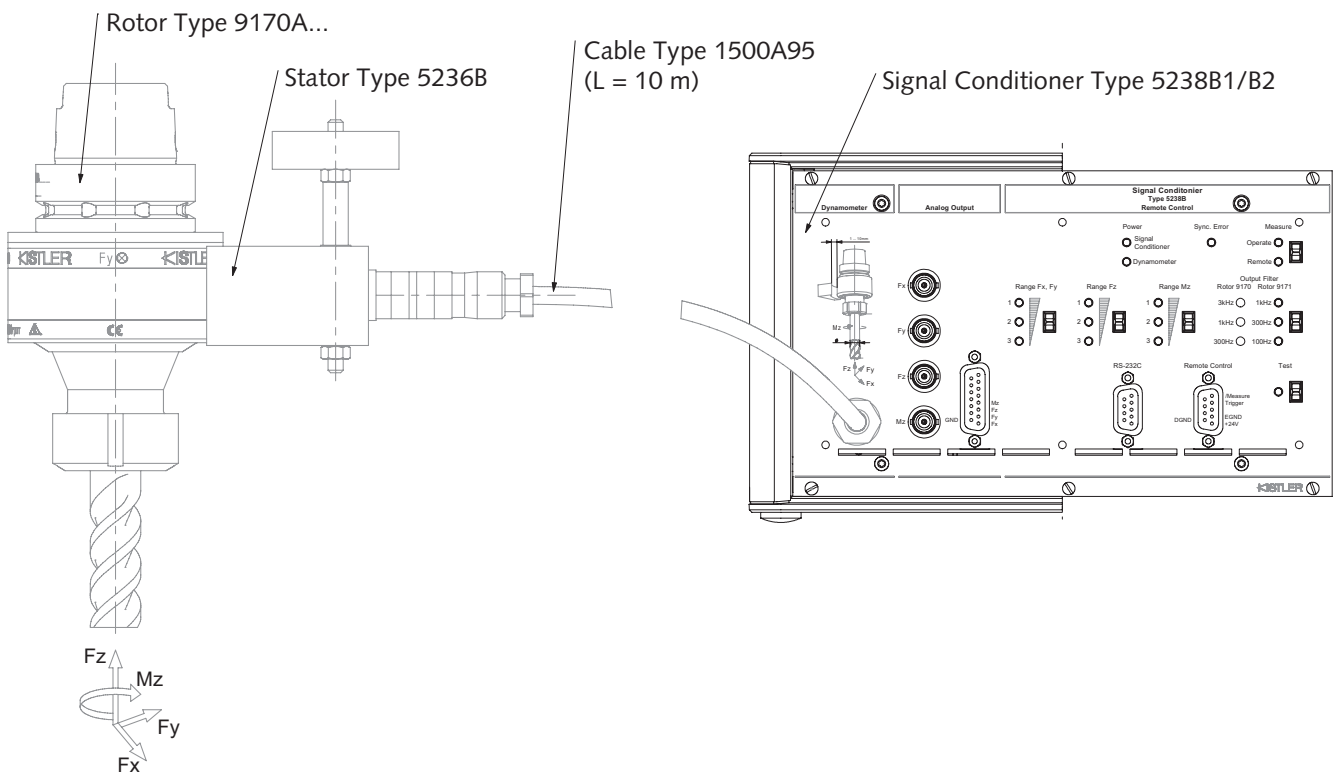


Fig. 1: Scheme of the measuring chain

9170A_000-995e-06.14

Calibration Ranges of the Different RCD Types

Type	Machine adapter			Calibration range 1	Calibration range 2	Calibration range 3
9170A111x	HSK-A40	F _x , F _y	N	1 000	500	250
		F _z	N	12 000	4 500	1 800
		M _z	N·m	80	45	9
9170A121x	HSK-A50	F _x , F _y	N	1 500	1 000	250
		F _z	N	18 000	4 500	1 800
		M _z	N·m	100	45	9
9170A131x	HSK-A63	F _x , F _y	N	3 000	1 500	300
		F _z	N	18 000	4 500	1 800
		M _z	N·m	100	45	9
9170A141x	HSK-A80	F _x , F _y	N	4 500	1 800	450
		F _z	N	18 000	4 500	1 800
		M _z	N·m	100	45	9
9170A161x	HSK-E40	F _x , F _y	N	1 000	500	250
		F _z	N	12 000	4 500	1 800
		M _z	N·m	15	12	9
9170A171x	HSK-E50	F _x , F _y	N	1 500	1 000	250
		F _z	N	18 000	4 500	1 800
		M _z	N·m	35	25	9
9170A181x	HSK-E63	F _x , F _y	N	3 000	1 500	300
		F _z	N	18 000	4 500	1 800
		M _z	N·m	70	45	9
9170A211x	DIN 69871-AD30	F _x , F _y	N	1 000	500	250
		F _z	N	12 000	4 500	1 800
		M _z	N·m	80	45	9
9170A221x	DIN 69871-AD40	F _x , F _y	N	3 000	1 500	300
		F _z	N	18 000	4 500	1 800
		M _z	N·m	100	45	9
9170A231x	DIN 69871-AD50	F _x , F _y	N	4 500	1 800	450
		F _z	N	18 000	4 500	1 800
		M _z	N·m	100	45	9
9170A241x	MAS 403 BT 30	F _x , F _y	N	1 000	500	250
		F _z	N	12 000	4 500	1 800
		M _z	N·m	80	45	9
9170A251x	MAS 403 BT 40	F _x , F _y	N	3 000	1 500	300
		F _z	N	18 000	4 500	1 800
		M _z	N·m	100	45	9
9170A261x	MAS 403 BT 50	F _x , F _y	N	4 500	1 800	450
		F _z	N	18 000	4 500	1 800
		M _z	N·m	100	45	9
9170A271x	ANSI B5.50-30	F _x , F _y	N	1 000	500	250
		F _z	N	12 000	4 500	1 800
		M _z	N·m	80	45	9
9170A281x	ANSI B5.50-40	F _x , F _y	N	3 000	1 500	300
		F _z	N	18 000	4 500	1 800
		M _z	N·m	100	45	9
9170A291x	ANSI B5.50-50	F _x , F _y	N	4 500	1 800	450
		F _z	N	18 000	4 500	1 800
		M _z	N·m	100	45	9
9170A311x	Capto C5	F _x , F _y	N	1 500	1 000	250
		F _z	N	18 000	4 500	1 800
		M _z	N·m	100	45	9
9170A321x	Capto C6	F _x , F _y	N	3 000	1 500	300
		F _z	N	18 000	4 500	1 800
		M _z	N·m	100	45	9

9170A_000-995e-06.14

Ordering Example: 9170A1312

Tested RCD Type 9170A... measuring system consisting of:

- Integrated spindle adapter HSK-A63
- Integrated collet holder ER, size 32 (DIN 6499-B32)
- Stator
- Connecting cable
- Signal conditioner in desktop case

The individual system components can also be ordered separately:

Component

Component	Type
• Rotor	9170Axx10
• Stator	5236B
• Connecting cable (l = 10 m)	1500A95
• Signal conditioner for rack installation	5238B1
• Signal conditioner for desktop case	5238B2
• Clamping wrench for ER collets	65007932

Ordering Key

Collets DIN 6499-B32-UP

Diameter d of Tool

1 ... 2 mm	02
2 ... 3 mm	03
3 ... 4 mm	04
4 ... 5 mm	05
5 ... 6 mm	06
6 ... 7 mm	07
7 ... 8 mm	08
8 ... 9 mm	09
9 ... 10 mm	10
10 ... 11 mm	11
11 ... 12 mm	12
12 ... 13 mm	13
13 ... 14 mm	14
14 ... 15 mm	15
15 ... 16 mm	16
16 ... 17 mm	17
17 ... 18 mm	18
18 ... 19 mm	19
19 ... 20 mm	20

Type 9169A

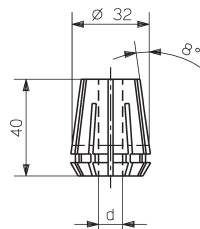


Fig. 2: Collet Type 9169A...

Included Accessories

- Clamping wrench for ER collets
- Clamping nut Hi-Q/ER32 for ER collet

Type/Art. No.

65007932
65007915

Optional Accessories

- Collets DIN 6499-B32-UP

Ordering Key

Rotating 4-Component Dynamometer
(RCD) for Cutting Force
Measurement

Type 9170A

Spindle Adapter (integrated)

HSK-A40	11
HSK-A50	12
HSK-A63	13
HSK-A80	14
HSK-E40	16
HSK-E50	17
HSK-E63	18
DIN 69871-AD30	21
DIN 69871-AD40	22
DIN 69871-AD50	23
MAS 403 BT 30	24
MAS 403 BT 40	25
MAS 403 BT 50	26
ANSI B5.50-30	27
ANSI B5.50-40	28
ANSI B5.50-50	29
Capto C5	31
Capto C6	32

Other spindle adapters available on request

Tool Holder (integrated)

Collet holder ER (DIN 6499 – B32)	1
--------------------------------------	---

Measuring System

Rotor only	0
Complete measuring system with rotor, stator, connecting cable and signal conditioner (rack mounted unit)	1
Complete measuring system with rotor, stator, connecting cable and signal conditioner (desktop case)	2